

BOOK OF THE

ROYAL  
BLUE

## TABLE OF CONTENTS.

HE 1001  
B724 page

October. By Strickland W. Gillman	1
Sketches. By R. M. Cheshire:	
The Underground Railroad	2
Wizard Clip	4
Caves of Refuge	6
The Shifting of Landmarks at Washington	7
By the Great Brown Buddha. By Charles Dennis	8
The Pleasure of the King, but not the Pleasure of the Free-	
men of Maryland. By Elihu S. Riley	9
A Page of "Sullivan." By James T. Sullivan	12
When we Watched the Trains Go By. By S. E. Kiser	13
In the Alleghenies. By Elihu S. Riley	14
Appreciation	17
Stub Ends of Thought. By Arthur G. Lewis	19
The Mother-Queen	19
Hunting and Fishing Grounds along the Baltimore & Ohio	20
Game Laws of Maryland, West Virginia, Virginia and Penn-	
sylvania	21

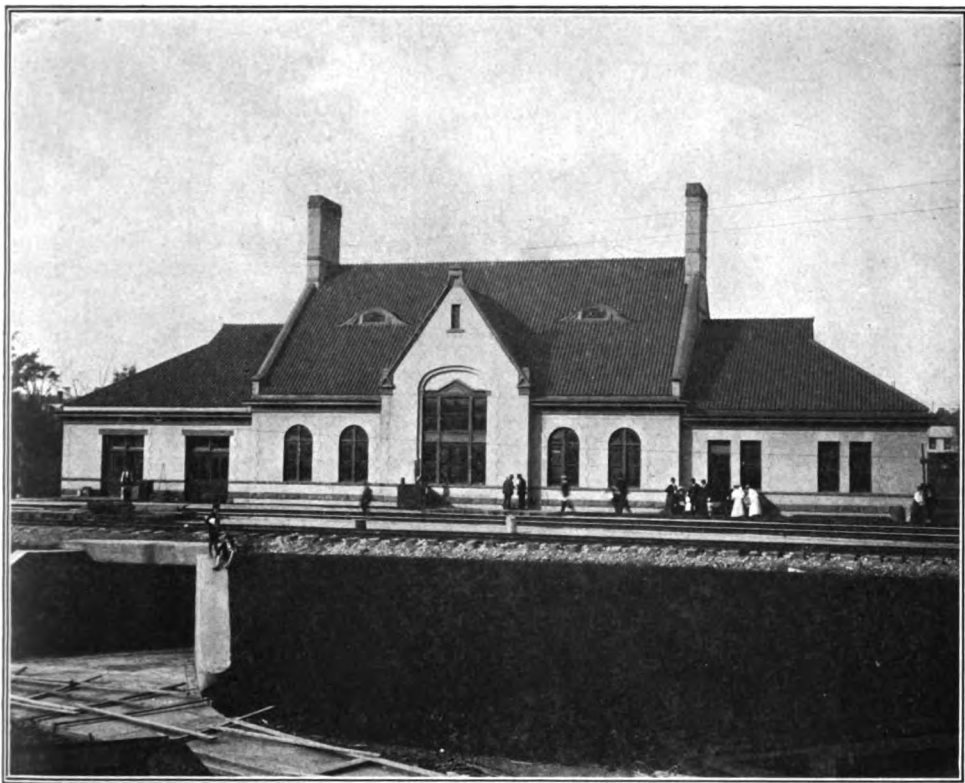
## ILLUSTRATIONS.

"October"	Frontispiece
The Underground Railroad, with Illustrations of "Stations"	2
In the Alleghenies	15-16

PRICE 5 CENTS.

50 CENTS PER YEAR.





THE NEW BALTIMORE & OHIO RAILROAD STATION AT YOUNGSTOWN, OHIO.  
SHOWING TRACK ELEVATION ABOVE THE STREETS. THE STATION  
IS TWO STORIES HIGH, FACING THE STREET AND PLAZA.

## THE NEW RAILWAY STATION AT YOUNGSTOWN, OHIO.

**I**N line with the general policy of the management of the Baltimore & Ohio Railroad to rebuild the stations over the entire system as fast as possible, Youngstown, Ohio, was among the first to receive the benefit of the general order.

The new station, antique German in style of architecture, is 150 feet long by 50 feet in depth and is two stories high. The tracks are on a level with the second story, leaving the railroad facade one story in height, with the main facade on the street two stories high. It is constructed of gray pressed brick with brown sandstone trimmings. The general waiting-room occupies the center of the building, with the height of both floors. It is 70 feet long by 50 wide and has a seating capacity

of 150. Opening upon it on the lower floor are the ticket office, news stand, telephone and telegraph booths, while the women's retiring room, men's smoking room, baggage room and several offices are on the second floor.

From the general waiting-room a separate subway reaches to each track, avoiding the necessity of passengers crossing the tracks to and from trains.

The interior woodwork is of quartered oak and the floor of the main waiting-room is marble mosaic. The roof of the entire structure is covered with red tile, Spanish design.

A 30-foot driveway of limestone and a 10-foot cement walk lead to the station from Mahoning Avenue, artistically fringed with lawn and flower beds.